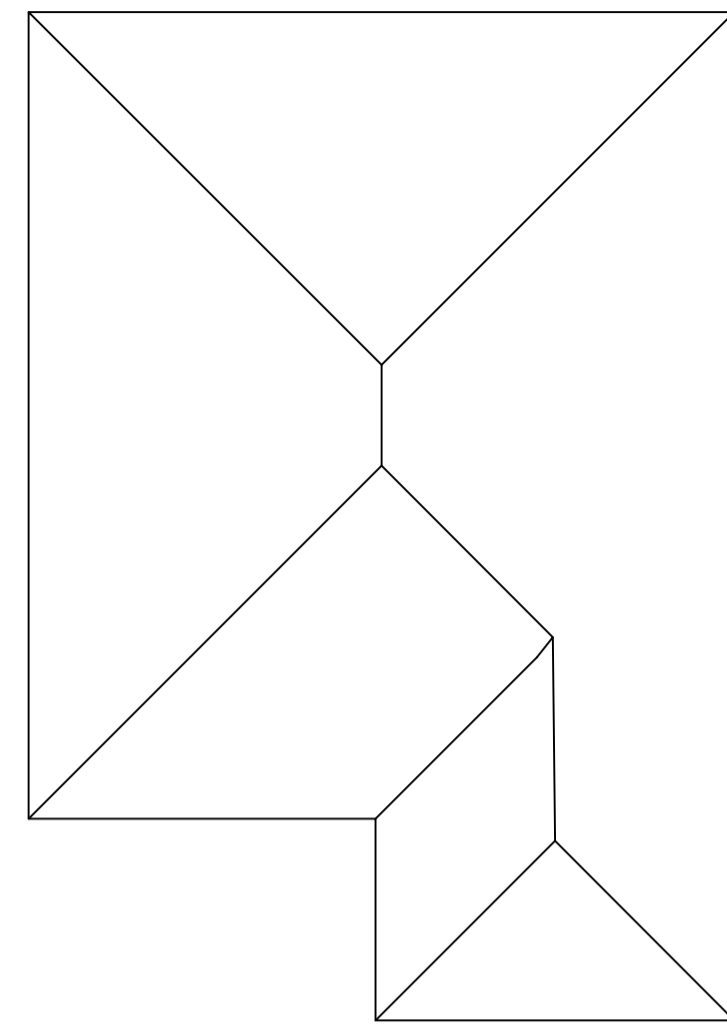
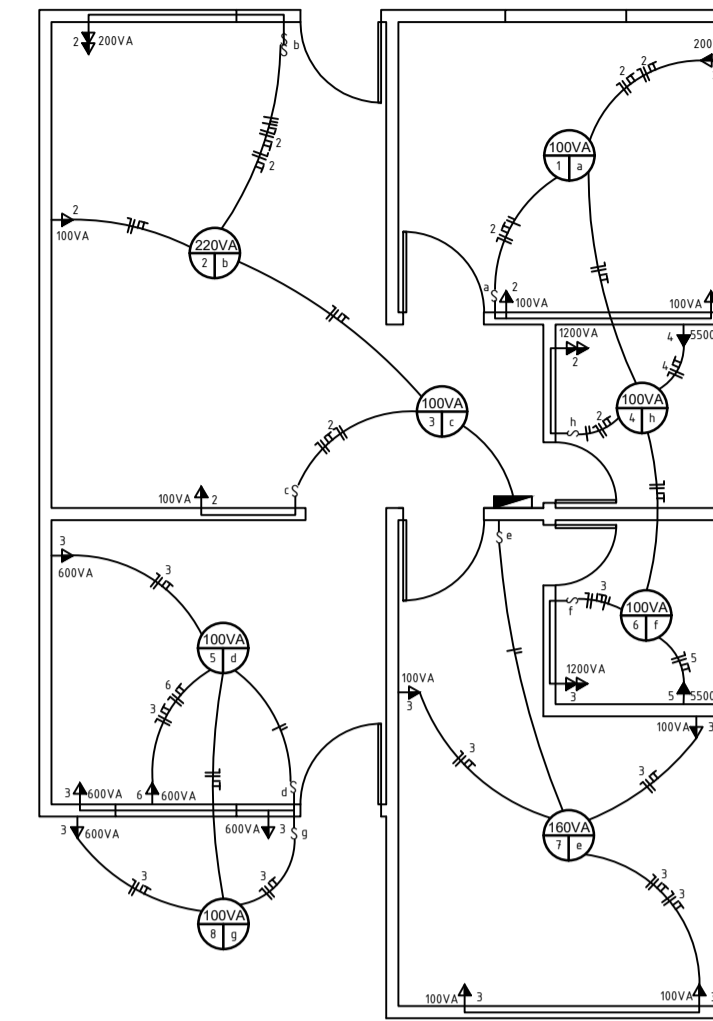
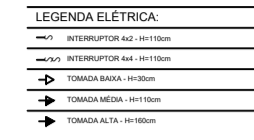


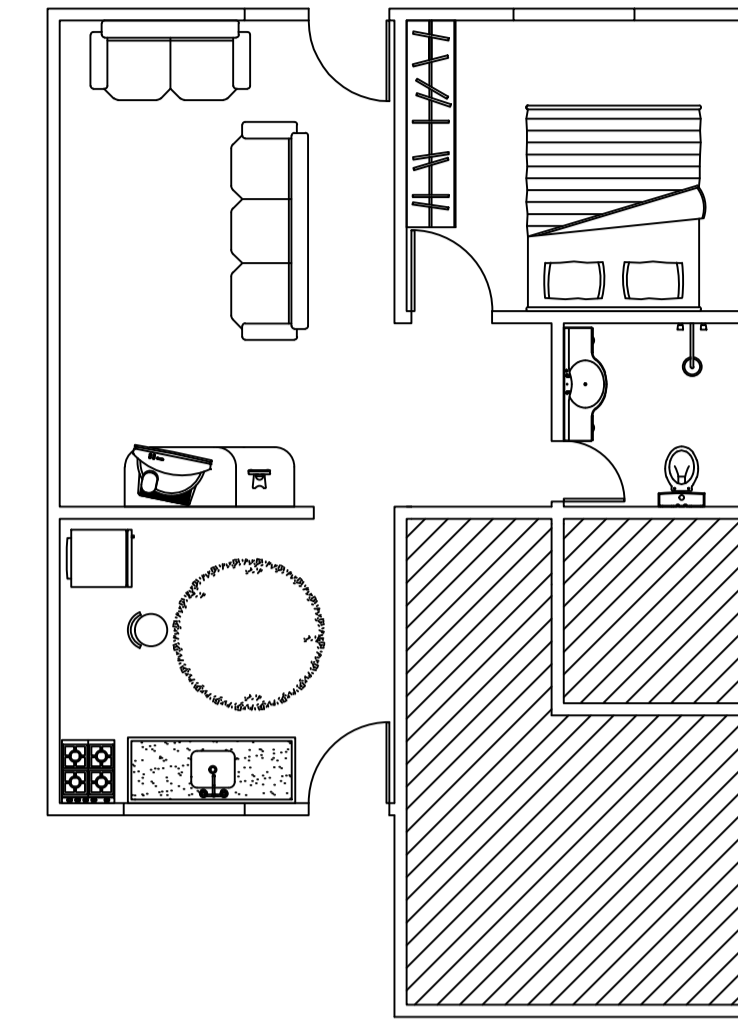
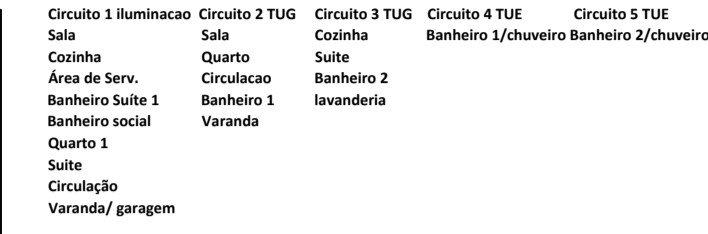
1 PLANTA BAIXA
ESCALA 1:75



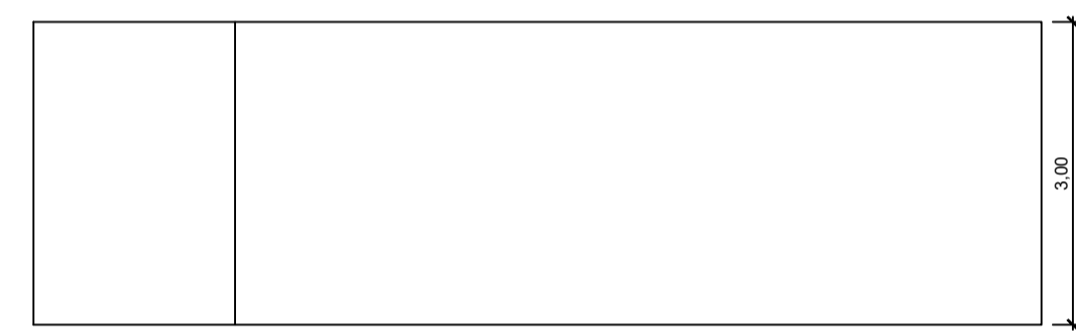
2 COBERTURA
ESCALA 1:75



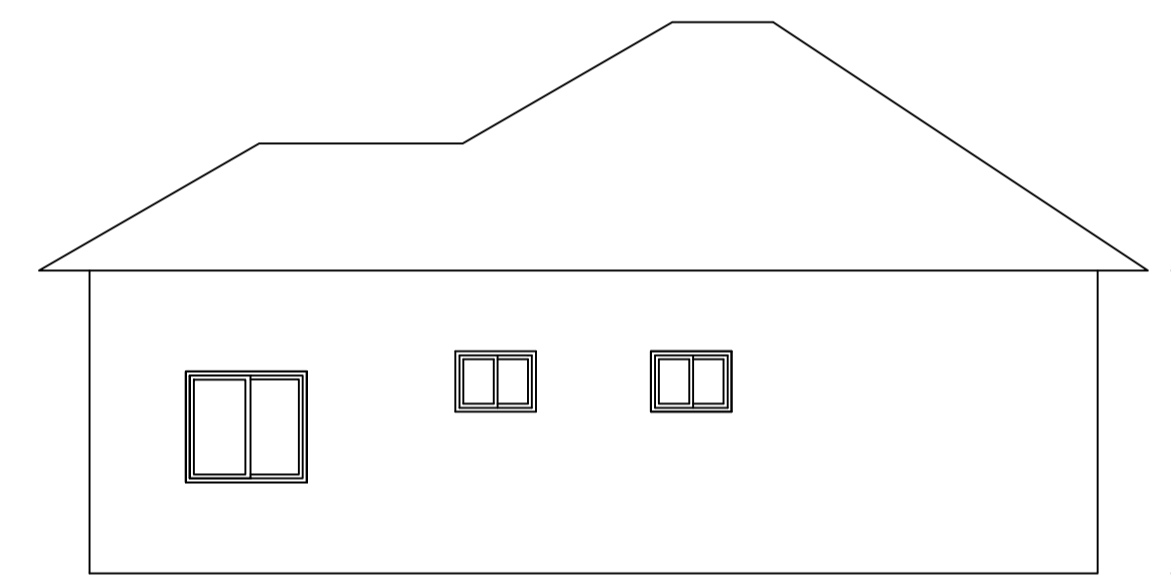
3 ELÉTRICA
ESCALA 1:75



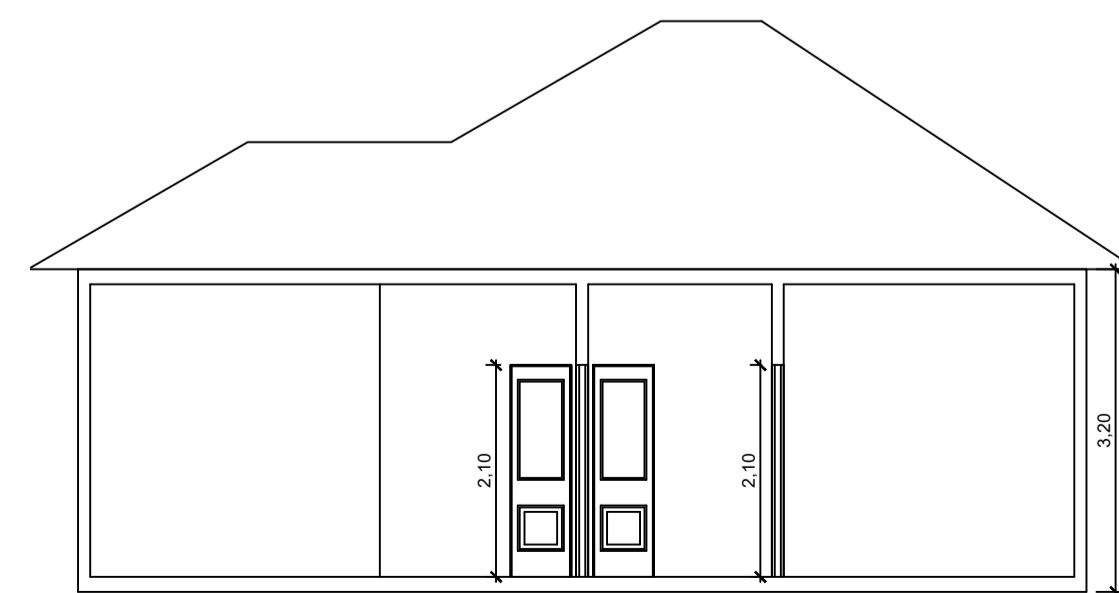
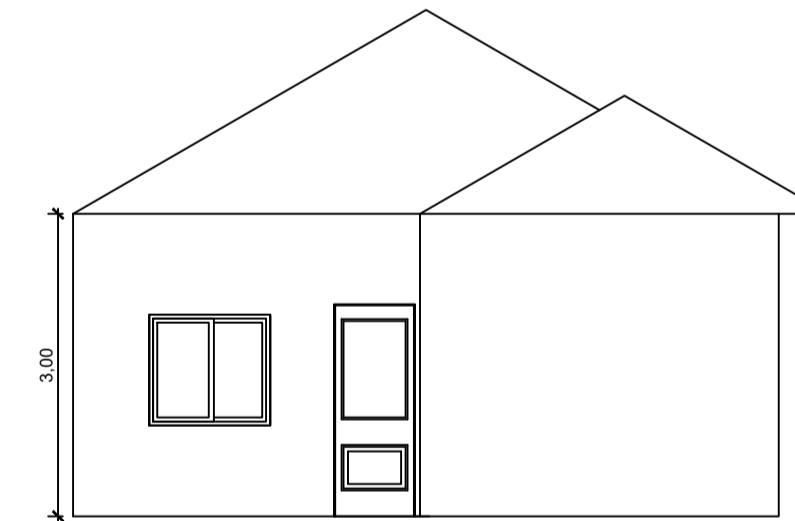
4 PLANTA EMBRIÃO
ESCALA 1:75



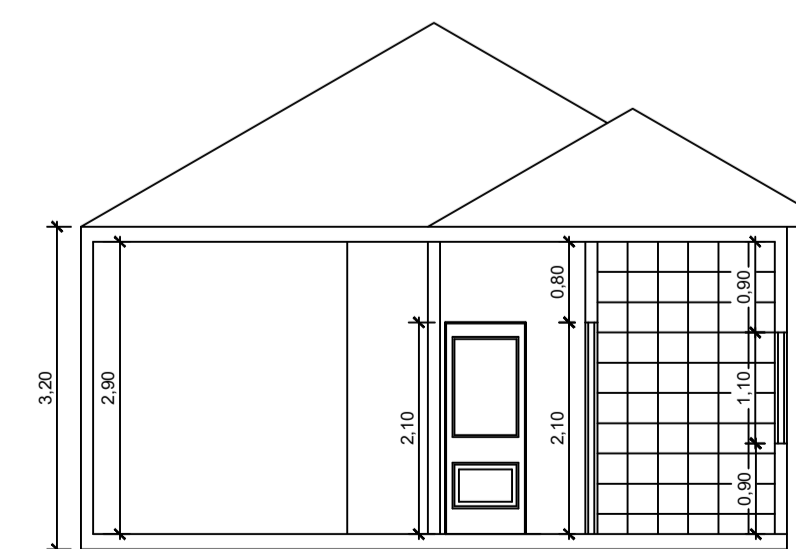
5 FACHADA LATERAL ESQ
ESCALA 1:75



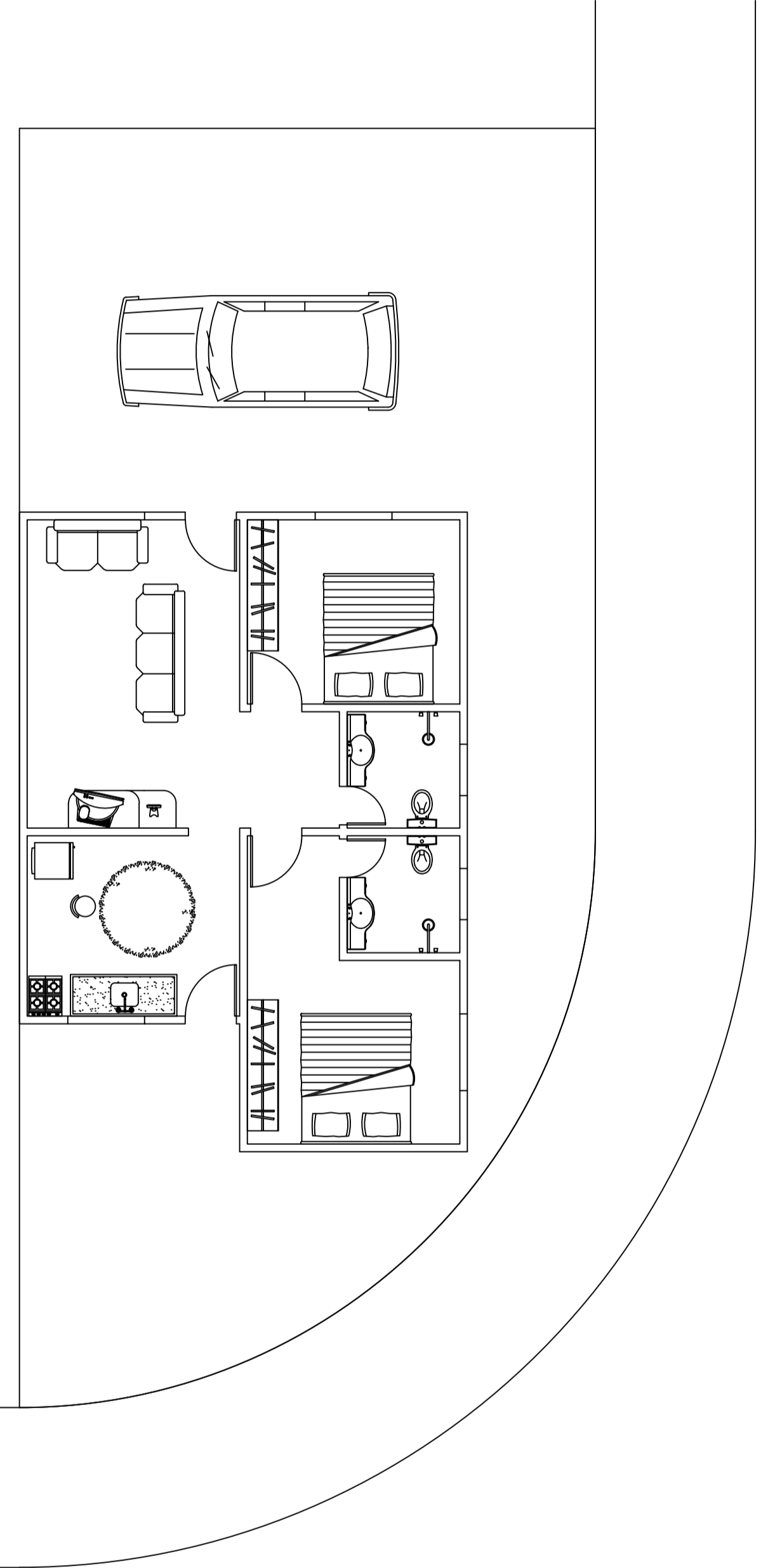
8 FACHADA TRASEIRA
ESCALA 1:75



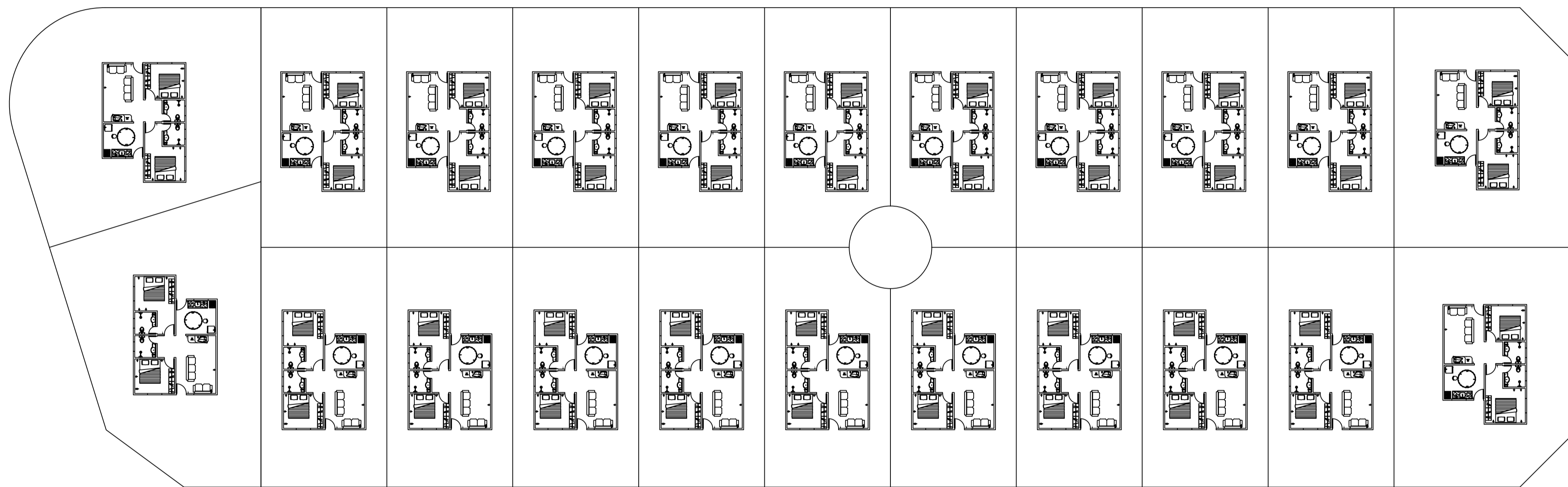
10 CORTE LONGITUDINAL
ESCALA 1:75



11 CORTE TRANSVERSAL
ESCALA 1:75



13 PLANTA DE LOCAÇÃO
ESCALA 1:75



12 PLANTA DE SITUAÇÃO
ESCALA 1:250